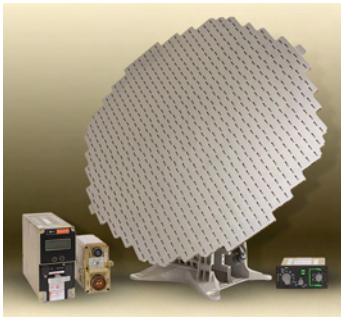




**Airborne 3D Weather Radar System  
with High-Resolution Ground Map**

# IntuVue™ RDR-4000M 3D Weather Radar System with High-Resolution Ground Map



The IntuVue™ RDR-4000M is the next-generation airborne weather and ground mapping radar for military transport aircraft. It is installed on the USAF/Boeing C-17 Globemaster. A version of the RDR-4000M has been selected for the new Japan C-X transport and for C-130

refits. Customers select the RDR-4000M because it is one of the most cost-effective radar systems available. The RDR-4000M lowers maintenance and operational costs. It offers several new and advanced technologies, processing approaches and operational modes.

## Advanced Technologies

Improved pulse compression technology provides higher resolution and improved weather and ground mapping capability. The skin paint mode optimizes radar parameters for detecting C-130 (30m<sup>2</sup>) size targets at ranges of up to 10 miles, even in the presence of 4 mm/hr rainfall. An emissions control function can shut down radar transmissions to maintain silent operations.

## Advanced Process Approaches

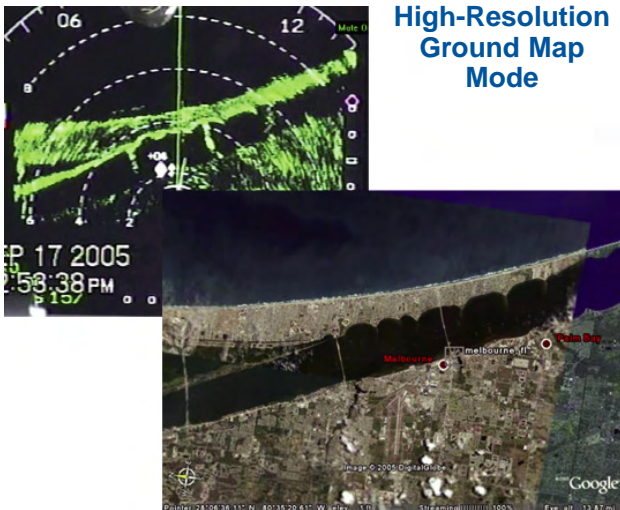
The RDR-4000M collects a complete 3D volumetric scan of all weather and terrain ahead of the aircraft, showing the most reflective part of the storm cell. It has a global terrain database that continually updates and enables the RDR-4000M to identify, tag, and extract ground clutter without affecting weather returns. The 3D scanning radar detects weather up to 320 nautical miles head of the aircraft and from the surface to 60,000 feet. Pulse compression and advanced processing techniques provide precise ground mapping with 60-ft. resolution out to 5 miles.

## Advanced Operational Modes

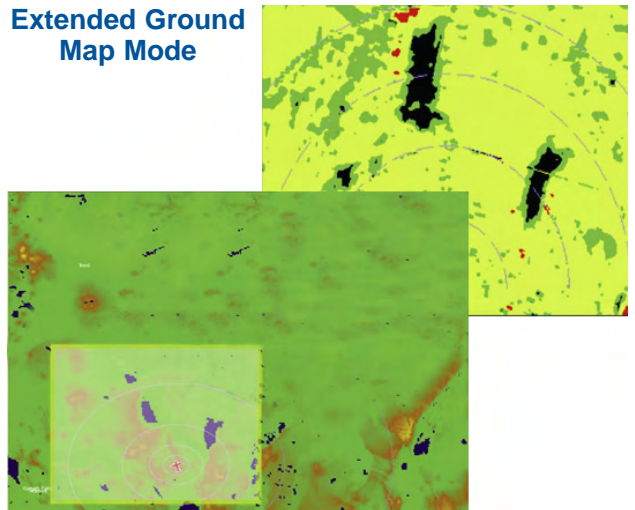
The RDR-4000M features automated weather detection. The automated features allow significant weather to be displayed without pilots having to make tilt adjustments, thereby supporting pilot safety by expanding time for situational awareness.

## Key Capabilities

- High-resolution ground map for a more detailed picture
- Skin paint mode for formation and refueling operations
- Automated weather and ground map mode for enhanced situational awareness
- Emissions control for silent running



## Extended Ground Map Mode



## Find out more information...

visit: [www.honeywell.com/RDR-4000M](http://www.honeywell.com/RDR-4000M)

## Honeywell Aerospace

Defense and Space

1944 E. Sky Harbor Circle

Phoenix, AZ 85234

Domestic 1.800.601.3099

International 1.602.365.3099

[www.honeywell.com](http://www.honeywell.com)

N61-0860-000-000

October 2008

© 2008 Honeywell International Inc.

# Honeywell